

RESOLUTION NO. 2010-014

**RESOLUTION OF THE BOARD OF COMMISSIONERS OF THE COUNTY OF DELAWARE, INDIANA, APPROVING AN AMENDMENT OF THE PLAN FOR THE DALEVILLE REDEVELOPMENT AREA**

WHEREAS, the Delaware County Redevelopment Commission (the "Redevelopment Commission") previously adopted and amended a Declaratory Resolution (the "Declaratory Resolution") establishing the Daleville Redevelopment Area (the "Redevelopment Area") and the Daleville Allocation Area (the "Allocation Area") in the County, and approving a Redevelopment Plan for the Redevelopment Area (the "Plan"); and

1. WHEREAS, on June 30, 2010, the Redevelopment Commission approved and adopted a Resolution (the "2010 Resolution") amending the Declaratory Resolution to authorize the application of tax increment revenues from the Daleville Allocation Area to pay principal and interest on bonds to be issued on behalf of DSE Services, Inc., or an affiliated company; and

WHEREAS, the Redevelopment Commission submitted the 2010 Resolution to the Delaware Muncie Metropolitan Plan Commission (the "Plan Commission") for its approval pursuant to IC 36-7-14-16; and

WHEREAS, on July 1, 2010, the Plan Commission issued its order approving the 2010 Resolution; and

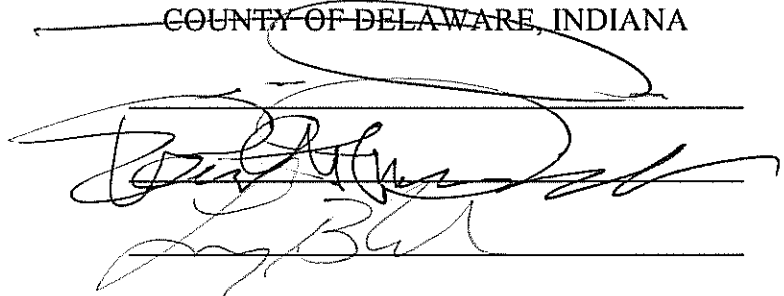
NOW THEREFORE, BE IT RESOLVED by the Board of Commissioners of the County of Delaware, Indiana, as follows:

1. The Board of Commissioners hereby approves the amendment to the Plan as provided in the 2010 Resolution, and hereby approves the order of the Plan Commission approving the 2010 Resolution.

2. This Resolution shall be in full force and effect from and after its passage by the Board of Commissioners as required by law.

DULY PASSED on this 6<sup>th</sup> day of July, 2010, by the Board of Commissioners.

BOARD OF COMMISSIONERS OF THE  
COUNTY OF DELAWARE, INDIANA



ATTEST:

  
Auditor

RESOLUTION NO. 2010-07

**RESOLUTION OF THE DELAWARE MUNCIE METROPOLITAN PLAN COMMISSION  
APPROVING AN AMENDMENT TO A DECLARATORY RESOLUTION APPROVED AND  
ADOPTED BY THE DELAWARE COUNTY REDEVELOPMENT COMMISSION**

WHEREAS, the Delaware Muncie Metropolitan Plan Commission (the "Plan Commission") is the body charged with the duty of developing a general plan of development for Delaware County, Indiana (the "County"); and

WHEREAS, the Delaware County Redevelopment Commission (the "Redevelopment Commission") previously adopted and amended a Declaratory Resolution (the "Declaratory Resolution") establishing the Daleville Redevelopment Area (the "Redevelopment Area") and the Daleville Allocation Area (the "Allocation Area") in the County, and approving a Redevelopment Plan for the Redevelopment Area (the "Plan"); and

WHEREAS, on June 30, 2010, the Redevelopment Commission approved and adopted a Resolution (the "2010 Resolution") amending the Declaratory Resolution to add a project to the Plan; and

WHEREAS, the Redevelopment Commission has submitted the 2010 Resolution to the Plan Commission for its approval pursuant to IC 36-7-14-16;

NOW, THEREFORE, BE IT RESOLVED BY THE DELAWARE MUNCIE METROPOLITAN PLAN COMMISSION, as follows:

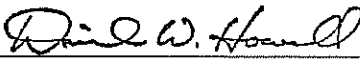
1. The 2010 Resolution and the amendment to the Plan contained therein conform to the plan of development for the County.

2. This Plan Commission hereby approves the 2010 Resolution and the amendment to the Plan contained therein. This resolution hereby constitutes the written order of the Plan Commission approving the 2010 Resolution and the amendment to the Plan contained therein pursuant to IC 36-7-14-16.

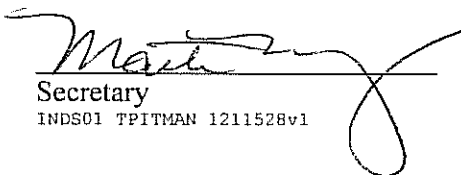
3. The Secretary of this Plan Commission is hereby directed to file a copy of the 2010 Resolution with the minutes of this meeting.

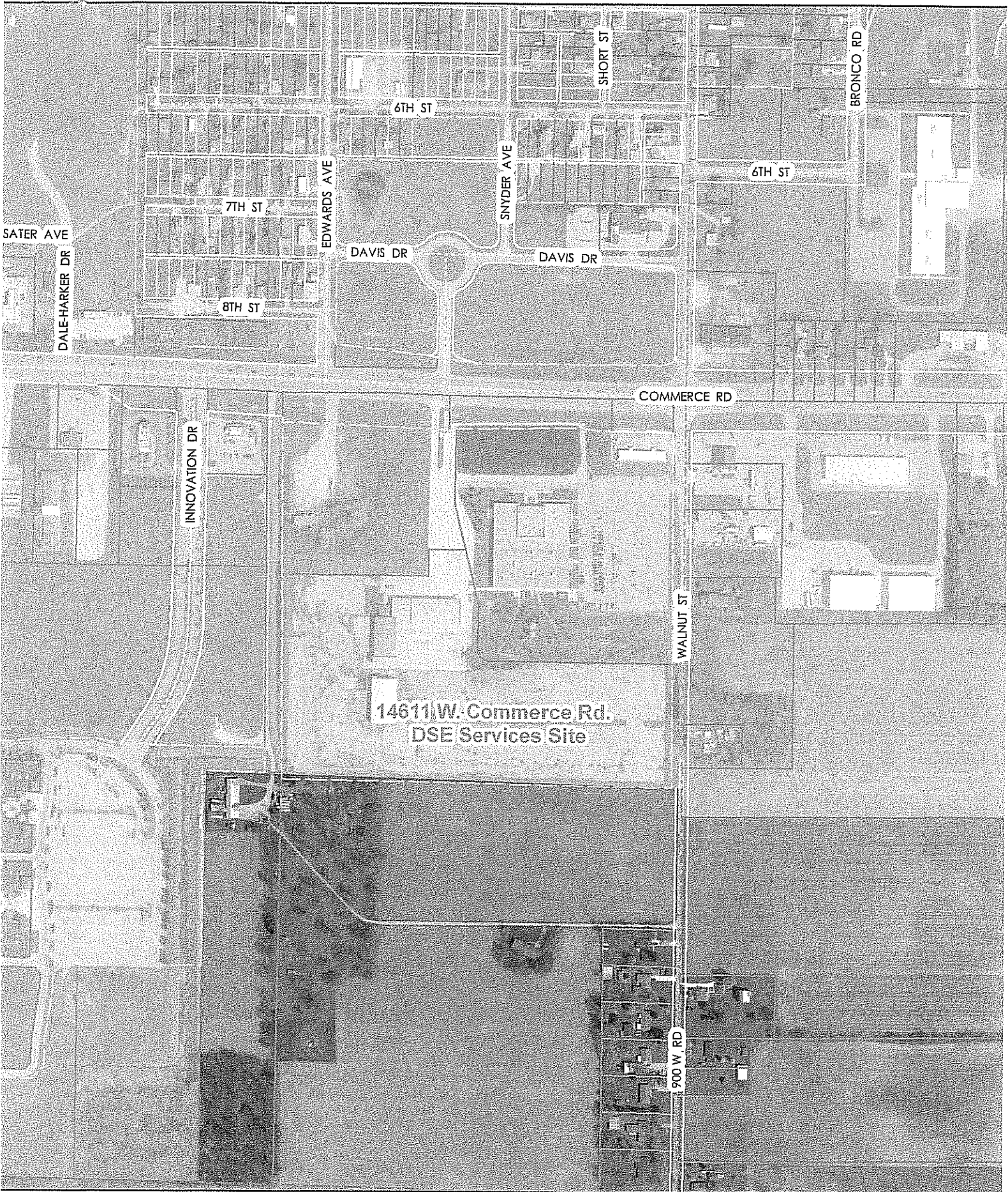
SO RESOLVED BY THE DELAWARE MUNCIE METROPOLITAN PLAN COMMISSION  
this 1<sup>st</sup> day of July, 2010.

DELAWARE MUNCIE METROPOLITAN  
PLAN COMMISSION

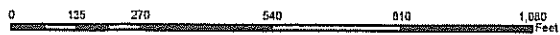
  
\_\_\_\_\_  
President

ATTEST:

  
\_\_\_\_\_  
Secretary  
INDS01 TPITMAN 1211528v1



# 2010 Daleville TIF Amendment - DSE Project



Created using Delaware County's Geographic Information System (GIS)

## DALEVILLE TIF

TIF\_DISTRICTS\_2008

