

2011-005

**REPORT TO THE BOARD OF COMMISSIONERS
OF
DELAWARE COUNTY, INDIANA**

ORIGINAL

To the Honorable:

Board of County Commissioners of Delaware County, Indiana

Dear Commissioners:

In accordance with the provisions of the Delaware County Comprehensive Zoning Ordinance, Article XI, Section 3, Subsection E, the Delaware-Muncie Metropolitan Plan Commission hereby submits to you a digital copy of the Official Zone Map changes for Delaware County, Indiana, showing the location all zoning changes acted upon by the Plan Commission and adopted by the Board of County Commissioners of Delaware County, Indiana, during the year 2010; a listing of such changes is attached herein as Exhibit "A".

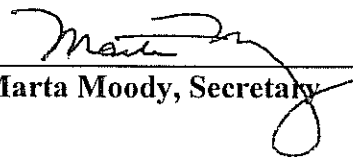
The Plan Commission approved the Official Zone Maps for Delaware County, Indiana, as updated to reflect the zoning changes for the Official Zone Map Changes for Delaware County, Indiana, on the 3rd day of March, 2011 by a vote of (7) yeas) and (0) nays.

Dated this 3rd day of March, 2011.

**DELAWARE-MUNCIE
METROPOLITAN PLAN COMMISSION
BY:**



Deane Rundell, President



Marta Moody, Secretary

2011.005

ORIGINAL

**RESOLUTION OF ADOPTION FOR APPROVAL OF THE
2010 ZONE MAP CHANGES FOR THE OFFICIAL ZONE MAPS
FOR
DELAWARE COUNTY, INDIANA**

WHEREAS, copies of the Official Zone Maps for Delaware County, Indiana, have been presented to the Board of County Commissioners of Delaware County, Indiana, showing the location of all zoning changes acted upon by the Delaware-Muncie Metropolitan Plan Commission and adopted by the Board of County Commissioners of Delaware County, Indiana, during the year 2010, along with a listing of said changes, briefly described for identification, attached herein as Exhibit "A"; and

WHEREAS, in accordance with the Delaware County Comprehensive Zoning Ordinance, the Official Zone Maps for Delaware County, Indiana, showing the location of all zoning changes adopted during the year 2010 were submitted to the Delaware – Muncie Metropolitan Plan Commission for its consideration; and

WHEREAS, the Delaware-Muncie Metropolitan Plan Commission found the Official Zone Maps to be correct in reflecting the zone changes adopted during the year 2010 and approved said maps as such on the 3rd day of March, 2011; and

WHEREAS, the Delaware County Comprehensive Zoning Ordinance requires that the Board of County Commissioners of Delaware County, Indiana, approve said maps as incorporating all zoning changes adopted during the year 2010; and

WHEREAS, said Official Zone Maps for Delaware County, Indiana, reflect the correct zone changes adopted during the year 2010.

**NOW, THEREFORE, BE IT RESOLVED BY THE BOARD OF COMMISSIONERS OF
DELAWARE COUNTY, INDIANA, AS FOLLOWS:**

Section 1. That the 2010 Official Zone Map Changes are hereby endorsed and incorporated as part of the Official Zone Maps for Delaware County, Indiana.

Section 2. That this resolution shall be in full force and effect from and after its passage by the Board of Commissioners of Delaware County, Indiana, this 21 day of March, 2011.

**BOARD OF COUNTY COMMISSIONERS
DELAWARE COUNTY, INDIANA**



Todd R. Donati, President




Donald H. Dunnuck, Vice President



Larry W. Bledsoe, Jr., Member

ATTEST:



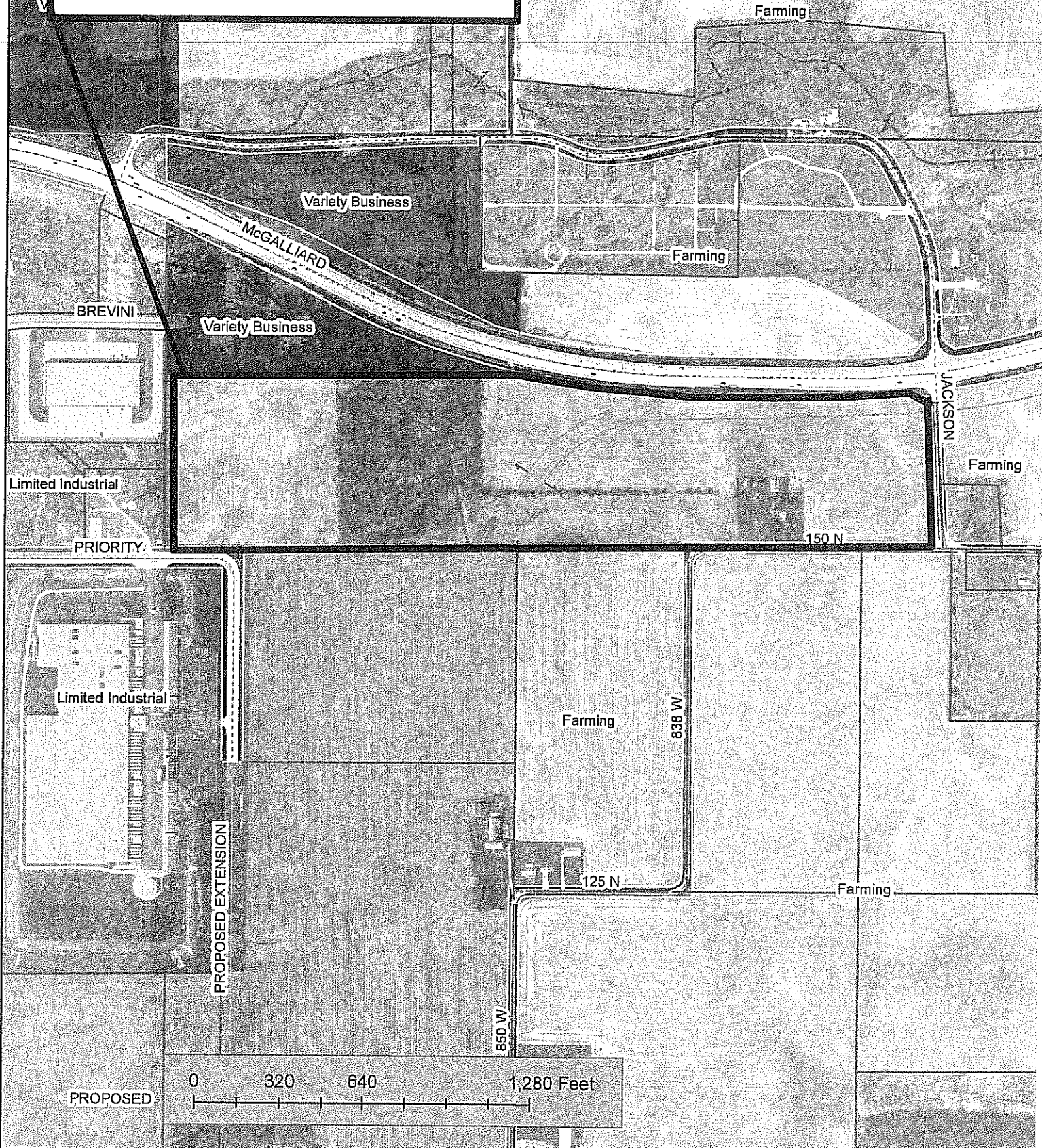
Judy Rust, Auditor

DELAWARE COUNTY REZONING CASES APPROVED FOR 2010

MPC 2-10Z **WILLIE E. & IDA K. McCOY**
ADDRESS: 13400 W. CR 150N
TOWNSHIP: MT. PLEASANT
REQUEST: F FARMING ZONE TO IL LIMITED INDUSTRIAL ZONE
MPC ACTION: FAVORABLE RECOMMENDATION (5-0)
DATE: 2-4-10
COUNTY COM. ACTION: ADOPTED (2-0)
DATE: 2-16-10

MPC 5-10Z **CARROLL & GUY MILLSPAUGH, JR.**
ADDRESS: E. SIDE OF THE 14300 & 14400 BLKS. OF CR 600W
TOWNSHIP: WASHINGTON
REQUEST: R-3 RESIDENCE ZONE TO BC COMMUNITY BUSINESS
 ZONE
MPC ACTION: FAVORABLE RECOMMENDATION (5-1)
DATE: 4-1-10
COUNTY COM. ACTION: ADOPTED (3-0)
DATE: 4-19-10

MPC 2-10Z McCOY Rezoned from F to IL



PROPOSED

0 320 640 1,280 Feet

MPC 5-10Z MILLSPAUGH Rezoning from R-3 to BC

