

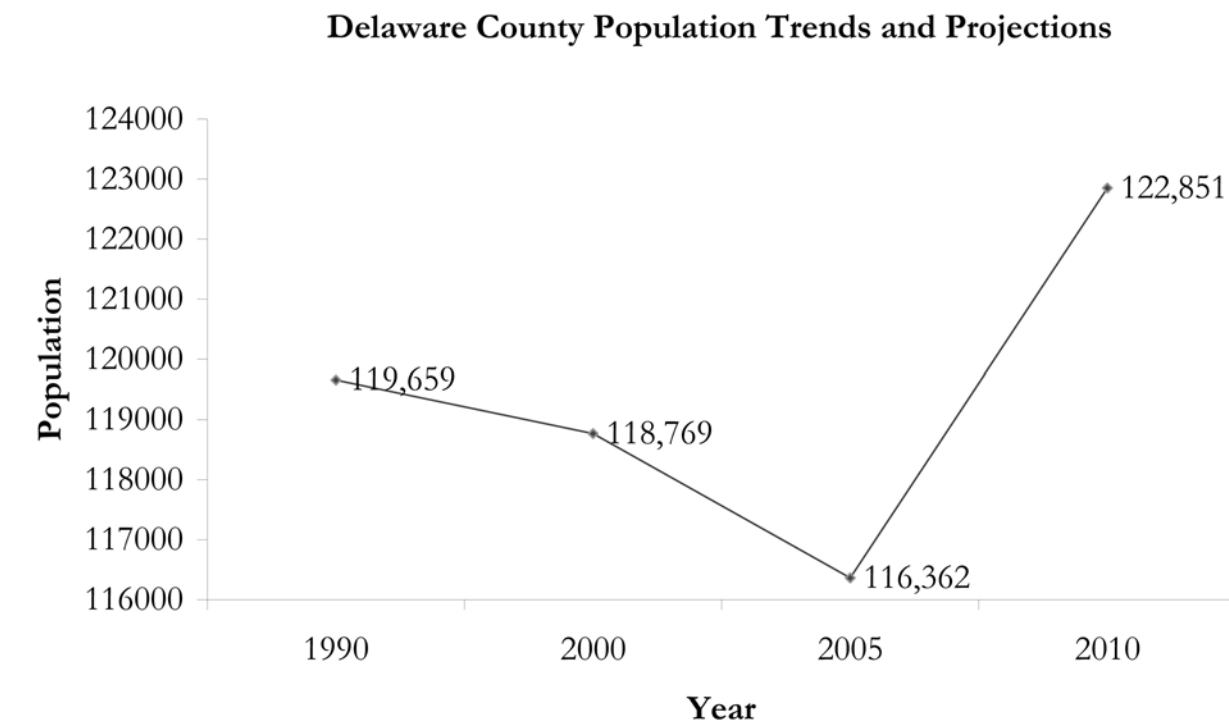


INTRODUCTION

This chapter summarizes the findings of demographics for Delaware County and Perry Township where data was available. Demographics present in this section include population trends, age distribution, education statistics, labor force statistics, poverty and income statistics, employment statistics, housing statistics, and agricultural statistics.

DELAWARE COUNTY POPULATION TRENDS

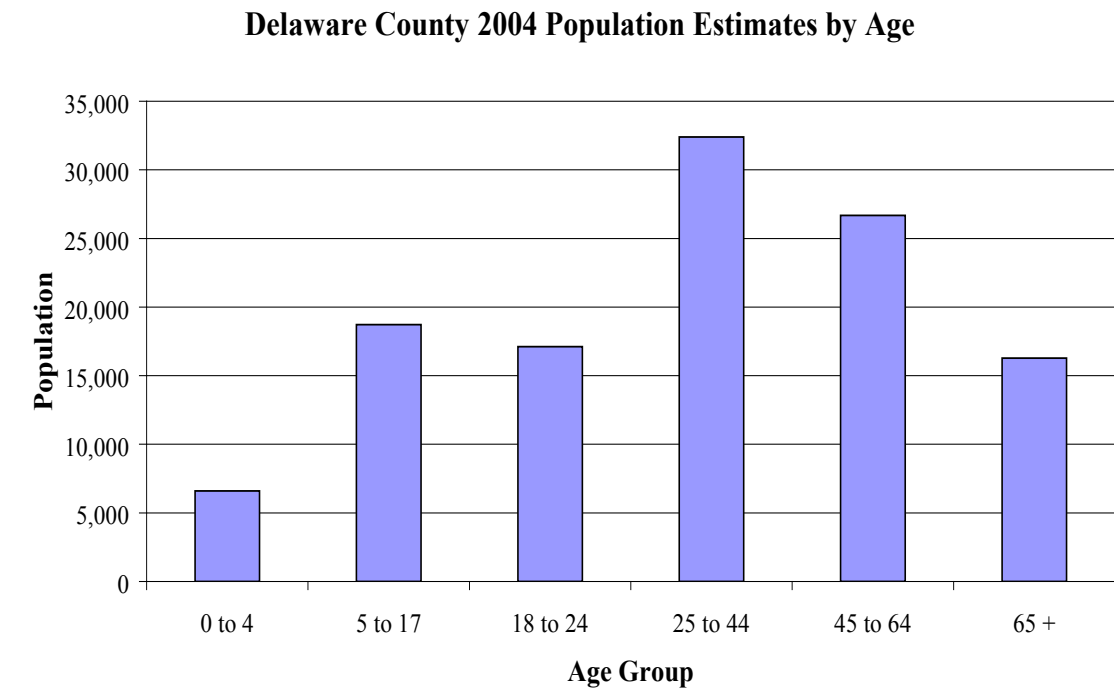
Figure 26 (below) shows how the population in Delaware County has changed and is expected to change over time. The U.S. Census Bureau's estimated population for Delaware County in 1990 was 119,659. Ten years later in 2000, the population declined by approximately 1,000 people to 118,769. In 2005, Delaware County's population again declined by approximately 2,000 people to a total population of 116,362. However, in 2010 the U.S. Census Bureau projects a population increase of approximately 6,000 people to a total population of 122,851. This could be due to the age distribution of the County. In 2004 the 25-44 age group had the largest population. The offspring of this age group could contribute to the increase in Delaware County's 2010 population. Of the 92 Indiana Counties, Delaware County ranks 14th for overall population based on 2005 population estimates.



Source: U.S. Census Bureau, 2005 Population estimates, Census 2000, 1990 Census <<http://www.factfinder.census.gov>>

DELAWARE COUNTY AGE DISTRIBUTION

Figure 27 (below) shows the age distribution of Delaware County from the U.S. Census Bureau's 2004 estimates. The 25-44 age group had a population of 32,389 representing the largest portion of the County's total population. The 45-64 age group represented the second largest portion of the total population with a 2004 population of 26,672.



Source: US Census Bureau; Indiana Business Research Center <<http://www.stats.indiana.edu/profiles/pr18035.html>>



DELAWARE COUNTY EDUCATION STATISTICS

The table below summarizes the educational attainment level for the Delaware County population compared to the Indiana population from the U.S. Census Bureau. Delaware County is ranked 13th in the state for number of high school graduates; there were 1,083 high school graduates in Delaware County from the 2003-2004 school year. Of those high school graduates, 990 or 91% were reported going on to higher education.

Education	Number	Rank in State	Percent of State	Indiana
School Enrollment (2004/2005 Total Reported)				
Public	18,781	14	1.6%	1,154,681
Private	1,556	9	1.2%	133,437
High School Graduates (2003/2004)	1,083	13	1.8%	59,655
Going on to Higher Education	990	10	2.0%	48,296
4-year	748	10	2.1%	36,056
2-year	188	12	2.4%	7,711
Vocational/technical	54	30	1.2%	4,529
Adults (25+ in 2000 Census)	72,444	13	1.9%	3,893,278
with High School diploma or higher	81.6%	36		82.1%
with B.A. or higher degree	20.4%	15		19.4%

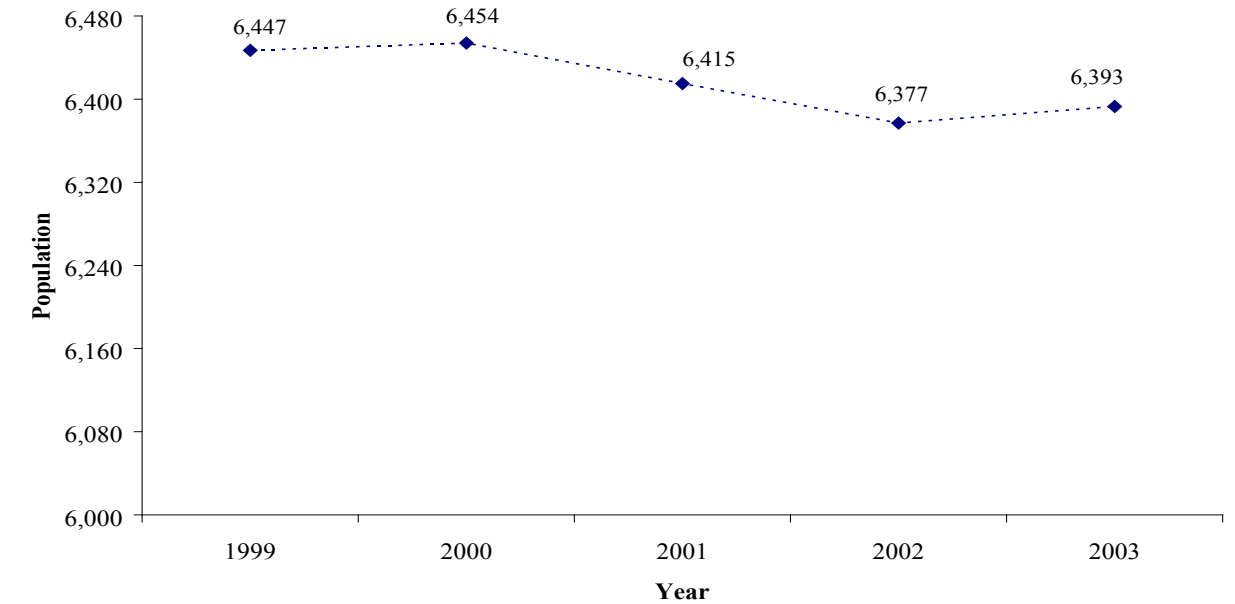
Source: Indiana Department of Education; U.S. Census Bureau
 <<http://www.stats.indiana.edu/profiles/pr18035.html>>

Table 4 shows 2003 education statistics for the Liberty-Perry Community School Corporation serving Liberty and Perry Townships and including Prairie Creek Reservoir. The total 2003 population in the Liberty-Perry school district (6,393) comprises approximately 6% of the total Delaware County population.

District Name	Grade Range of Responsibility	Total Population	"Relevant" age 5 to 17	"Relevant" age 5 to 17 in families in poverty
Liberty-Perry Community School Corporation	K - 12	6,393	1,180	73

Source: U.S. Census Bureau, Housing and Household Economic Statistics Division, Small Area Estimates Branch
 <<http://www.census.gov/cgi-bin/saie/saie.cgi>>

Liberty-Perry Community School Corporation Population Trend



Source: U.S. Census Bureau. SAIPE. 17 April 2006. <<http://www.census.gov/cgi-bin/saie/saie.cgi>>

Figure 28 (above) shows the Liberty-Perry school district population trend over a five year period. The population declined slightly between the years of 1999 to 2003.



DELAWARE COUNTY LABOR FORCE STATISTICS

Table 5 summarizes the labor forces statistics for Delaware County in 2004. The unemployment rate in Delaware County (6) was higher than the state's rate (5.2) in 2004. The gap widened (6.4; 5.0) in 2005.

Labor Force in 2004	Number	Rank in State	Percent of State	Indiana
Total Resident Labor Force	57,036	14	1.8%	3,170,404
Employed	53,639	14	1.8%	3,005,247
Unemployed	3,397	12	2.1%	165,157
Unemployment Rate	6	23	115.4%	5.2
December 2005 Unemployment Rate	6.4	19	120.8%	5

Source: Bureau of Labor Statistics; Indiana Department of Workforce Development <<http://www.stats.indiana.edu/profiles/pr18035.html>>

DELAWARE COUNTY INCOME AND POVERTY STATISTICS

Table 6 shows the annual per capita income in Delaware County in 2003 was approximately \$26,000; this ranks 40th in the state and is lower than the state's annual per capita income. The median household income ranked even lower at 87th. Like the unemployment rate, the 2003 poverty rate (13.4%) in Delaware County was higher than the state's poverty rate (10%).

Income and Poverty	Number	Rank in State	Percent of State	Indiana
Per Capita Personal Income (annual) in 2003	\$25,905	40	89.8%	\$28,838
Median Household Income	\$35,212	87	81.3%	\$43,323
Poverty Rate in 2003	13.4%	3	134.0%	10.0%
Poverty Rate among Children under 18 in 2003	17.2%	10	125.5%	13.7%
Welfare (TANF) Monthly Average Families in 2004	1,138	8	2.1%	54,330
Foodstamp Recipients in 2004	12,108	8	2.3%	516,360
Free and Reduced Fee Lunch Recipients in 2004	6,708	9	1.9%	356,702

Source: U.S. Bureau of Economic Analysis; US Census Bureau; Indiana Family Social Services Administration; Indiana Department of Education <<http://www.stats.indiana.edu/profiles/pr18035.html>>

DELAWARE COUNTY EMPLOYMENT STATISTICS

Table 7 shows Delaware County employment for 2003 was 66,437 persons. Health care, social services (11,032) and government (11,273) make up almost 34% of that total. The highest average wage (\$68,385) was found in the manufacturing industry.

Employment and Earnings by Industry in 2003 (NAICS)	Employment	Pct Dist. In County	Earnings	PCT Dist. In County	Ave. Earnings Per Job
Total by place of work	66,437	100.0%	\$2,242,893	100.0%	\$33,760
Wage and Salary	56,560	85.1%	\$1,625,724	72.5%	\$28,743
Farm Proprietors	663	1.0%	\$5,858	0.3%	\$8,836
Nonfarm Proprietors	9,214	13.9%	\$142,640	6.4%	\$15,481
Farm	808	1.2%	\$7,882	0.4%	\$9,755
Nonfarm	65,629	98.8%	\$2,235,011	99.6%	\$34,055
Private	54,356	81.8%	\$1,797,630	80.1%	\$33,071
Accommodation, Food Service	4,673	7.0%	\$59,276	2.6%	\$12,685
Arts, entertainment, Recreation	956	1.4%	\$8,917	0.4%	\$9,327
Construction	3,343	5.0%	\$122,474	5.5%	\$36,636
Health Care, Social Service	11,032	16.6%	\$398,071	17.7%	\$36,083
Information	564	0.8%	\$18,041	0.8%	\$31,988
Manufacturing	7,803	11.7%	\$537,116	23.9%	\$68,835
nbsp; Professional, Tech. Serv.	Data not available due to BEA non-disclosure requirements.				
Retail Trade	8,563	12.9%	\$161,999	7.2%	\$18,918
Trans., Warehousing	1,309	2.0%	\$47,106	2.1%	\$35,986
Wholesale Trade	1,495	2.3%	\$62,107	2.8%	\$41,543
Other Private (not above)	11,270*	17.0%*	\$267,211*	11.9%*	\$23,710*
Government	11,273	17.0%	\$437,381	19.5%	\$38,799

Source: US Bureau of Economic Analysis <<http://www.stats.indiana.edu/profile/pr18035.html>>

* These totals do not include county data that are not available due to BEA non-disclosure requirements



DELAWARE COUNTY HOUSING STATISTICS

The 51,032 housing units available in Delaware County represent 2% of the state's total housing units. Housing characteristics in Delaware County generally reflect state trends.

Geographic Area	Total Housing Units	Occupied Housing Units	Vacant Housing Units			Vacancy Rate		
			Total	For Sale Only	For Rent	Seas., Rec., or occ.	Homeowner	Rental
Indiana	2,532,319	2,336,306	196,013	15.2%	32.8%	17.2%	1.8	8.8
County								
Delaware	51,032	47,131	3,901	13.9%	39.3%	5.1%	1.7	9

Source: U.S. Census Bureau, Census 2000 Summary File 1, Matrices H1, H3, H4, and H5. 17 April 2006
 <http://factfinder.census.gov/servlet/GCTTable?_bm=y&-geo_id=04000US18&-_box_head_nbr=GCT-H5&-ds_name=DEC_2000_SF1_U&-format=ST-2>

Delaware County covers 395.92 square miles or just over 1% of the state's total area. The county is more densely populated (302 people per square mile) than the state in general (169.5 people per square mile).

Geographic Area	Total Population	Total Housing Units	Area in Square Miles			Density Per Square Mile of Land Area	
			Total Area	Water Area	Land Area	Population	Housing Units
Indiana	6,080,485	2,532,319	36,417.73	550.83	35,866.9	169.5	70.6
County							
Delaware	118,769	51,032	395.92	2.63	393.29	302.0	129.8

Source: U.S. Census Bureau, Census 2000 Summary File 1
 <http://factfinder.census.gov/servlet/GCTTable?_bm=y&-geo_id=04000US18&-ds_name=DEC_2000_SF1_U&-_lang=en&-redoLog=false&-mt_name=DEC_2000_SF1_U_GCTPH1_ST2&-format=ST-2>

Table 10 shows Delaware County householders are slightly older (22% 65 and older) than the state average (20.8% 65 or older). The average household size in Delaware County is smaller (2.37) than the state (2.53) and there are a higher percentage of renters (33%; 29%) compared to home ownership (67.2%; 71.4%). Home ownership is higher in Perry Township (89.4%) where Prairie Creek Reservoir is located.

Geographic Area	Total Population	Occupied Housing Units						
		Total	Owner	Renter	Average Household Size	Owner	1-person Household	With Householder 65 Yrs & Over
Indiana	6,080,485	2,336,306	1,669,162	667,144	2.35	71.4%	25.9%	20.8%
Delaware County	118,769	47,131	31,687	15,444	2.37	67.2%	28.2%	22.0%
Center Twp	71,120	28,756	16,344	12,412	2.25	56.8%	33.4%	22.3%
Delaware Twp	3,797	1,539	1,203	336	2.42	78.2%	25.7%	25.6%
Hamilton Twp	7,163	2,735	2,429	306	2.62	88.8%	19.0%	21.5%
Harrison Twp	3,425	1,220	1,049	171	2.62	86.0%	17.5%	20.3%
Liberty Twp	4,919	1,915	1,584	331	2.55	82.7%	18.5%	23.2%
Monroe Twp	3,636	1,366	1,250	116	2.63	91.5%	15.4%	23.8%
Mount Pleasant Twp	12,591	4,927	3,833	1,094	2.52	77.8%	21.3%	19.6%
Niles Twp	1,321	499	455	44	2.65	91.2%	17.2%	22.8%
Perry Twp	1,528	595	532	63	2.57	89.4%	18.2%	20.0%
Salem Twp	4,099	1,606	1,357	249	2.55	84.5%	21.7%	22.4%
Union Twp	3,004	1,174	985	189	2.56	83.9%	21.3%	21.3%

Source: U.S. Census Bureau, Census 2000 Summary File 2, Matrices PCT1, HCT2, HCT5, HCT6, and HCT8.
 <http://factfinder.census.gov/servlet/GCTTable?_bm=y&-content=gct&-reg=DEC_2000_SF2_U_GCTH6_CO2&-ds_name=DEC_2000_SF2UU&-CONTENT=gct&-mt_name=DEC_2000_SF2_U_GCTH6_CO2&-tree_id=402&-redoLog=true&-geo_id=05000US18035&-format=CO-2&-_lang=en>



DELAWARE COUNTY AGRICULTURE STATISTICS

There are approximately 189,600 acres of farmland in Delaware County. In 2004, corn was planted on 63,200 acres yielding 10,315,600 bushels. Soybeans covered 90,200 acres and yielded 4,564,700 bushels.

Table 11: Delaware County Agriculture Statistics	
Agriculture Statistics	Delaware County
Number of Farms (2002)	687
Land In Farms (thousand acres) (2002)	189.6
Avg. Value Per Acre (dollars) (2002)	2,540
Planted Acres of Corn (thousands) (2004)	63.2
Harvested Acres of Corn (thousands) (2004)	62.7
Corn Yield (Bu/Ac) (2004)	165
Corn Production (thousand Bu) (2004)	10,315.6
Planted Acres of Soybeans (thousands) (2004)	90.2
Harvested Acres of Soybeans (thousands) (2004)	90.0
Soybean Yield (Bu/Ac) (2004)	51
Soybean Production (thousand Bu) (2004)	4,564.7

Sources: Delaware County Data 2002 USDA, NASS, Indiana Field Office; Delaware County Data Corn, Indiana 2004 Revised USDA, NASS, Indiana Field Office; Delaware County Data, Soybeans, Indiana 2004 USDA, NASS, Indiana Field Office

Figure 29 shows the change in the number of farms in Delaware County between 1997 and 2002. The results vary with the size of the farm. The number of farms with 50 acres or less increased while the number of farms with 50 to 179 acres decreased.

Change in Number of Farms in Delaware County

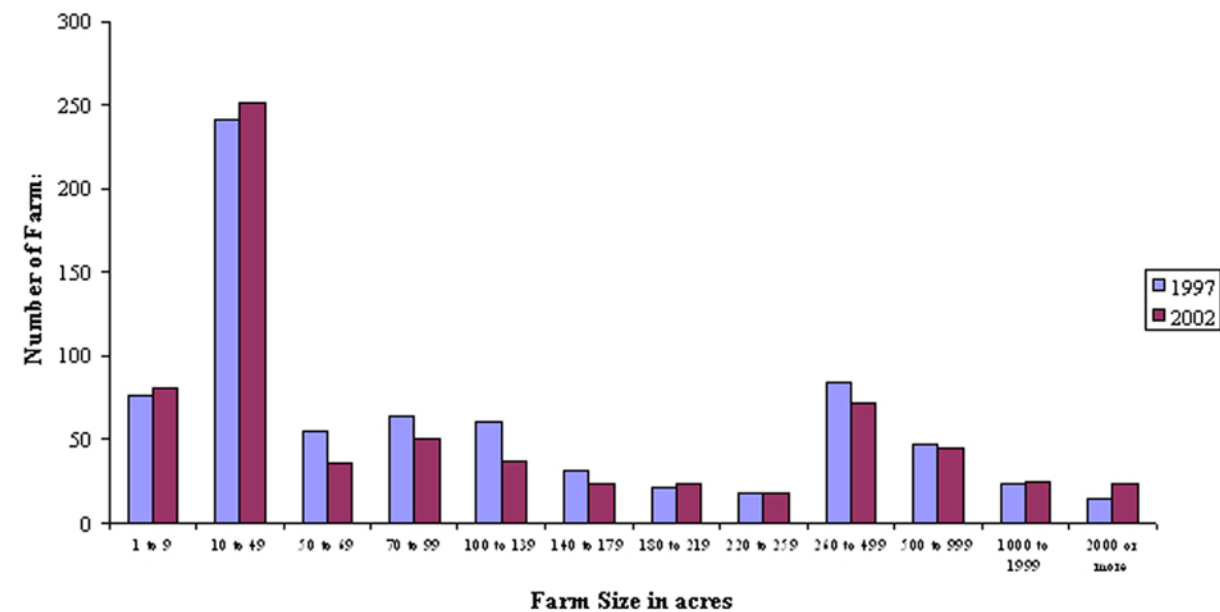
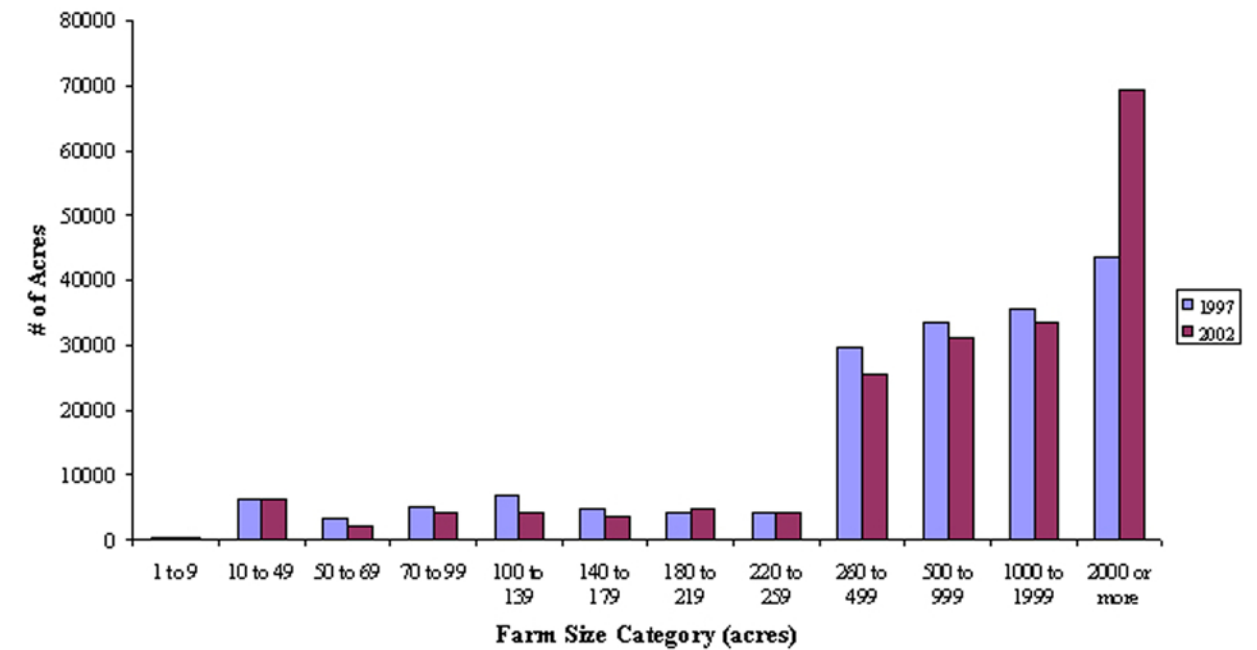


Figure 29: Change in Number of Farms in Delaware County.

Change in Farm Acreage in Delaware County



Source: "Table 8. Farms, Land in Farms, Value of Land and Buildings, and Land Use: 2002 and 1997." 2002 Census of Agriculture County Data. USDA National Agricultural Statistics Service. 15 February 2006. <http://www.nass.usda.gov/census/census02/volume1/invt18_2_008_008.pdf>

Figure 30 (above) shows the change in acreage of farms between 1997 and 2002. Farms with large acreage (2000 acres or more) had a large increase. It appears as though larger, more commercial farms are becoming more frequent in Delaware County compared to small farms (179 acres or less) have decreased.

