

RESOLUTION NO. 2012-004  
RESOLUTION OF APPROVAL FOR THE  
2011 CHANGES TO THE OFFICIAL ZONE MAPS  
FOR DELAWARE COUNTY, INDIANA

ORIGINAL

WHEREAS, Official Zone Map excerpts have been presented to the Board of County Commissioners of Delaware County, Indiana, showing the location of all zoning changes acted upon by the Delaware-Muncie Metropolitan Plan Commission and adopted by the Board of County Commissioners of Delaware County, Indiana, during the year 2011, along with a listing of said changes, briefly described for identification, attached herein as Exhibit "A"; and

WHEREAS, in accordance with the Delaware County Comprehensive Zoning Ordinance, the Official Zone Maps for Delaware County, Indiana showing the location of all zoning changes adopted during the year 2011, were submitted to the Delaware-Muncie Metropolitan Plan Commission for its consideration; and

WHEREAS, the Delaware-Muncie Metropolitan Plan Commission found the Official Zone Maps to be correct in reflecting the zone changes adopted during the year 2011 and approved said maps as such on the 2nd day of February, 2012; and

WHEREAS, the Delaware County Comprehensive Zoning Ordinance requires that the Board of County Commissioners of Delaware County, Indiana approve said maps as incorporating all zoning changes adopted during the year 2011; and

WHEREAS, the said Official Zone Maps for Delaware County, Indiana reflect the correct zone changes adopted during the year 2011.

**NOW, THEREFORE, BE IT RESOLVED BY THE BOARD OF COMMISSIONERS OF DELAWARE COUNTY, INDIANA, AS FOLLOWS:**

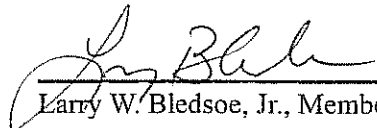
**Section 1** That the 2011 Official Zone Map changes are hereby endorsed and incorporated as part of the Official Zone Maps for Delaware County, Indiana.

**Section 2** That this resolution shall be in full force and effect from and after its passage by the Board of County Commissioners of Delaware County, Indiana this 20 day of February, 2012.

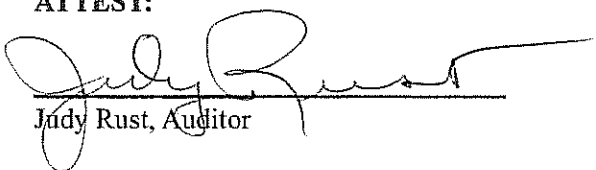
**Board of County Commissioners  
Delaware County, Indiana**

  
Todd R. Donati, President

  
Donald H. Dunnuck, Vice President

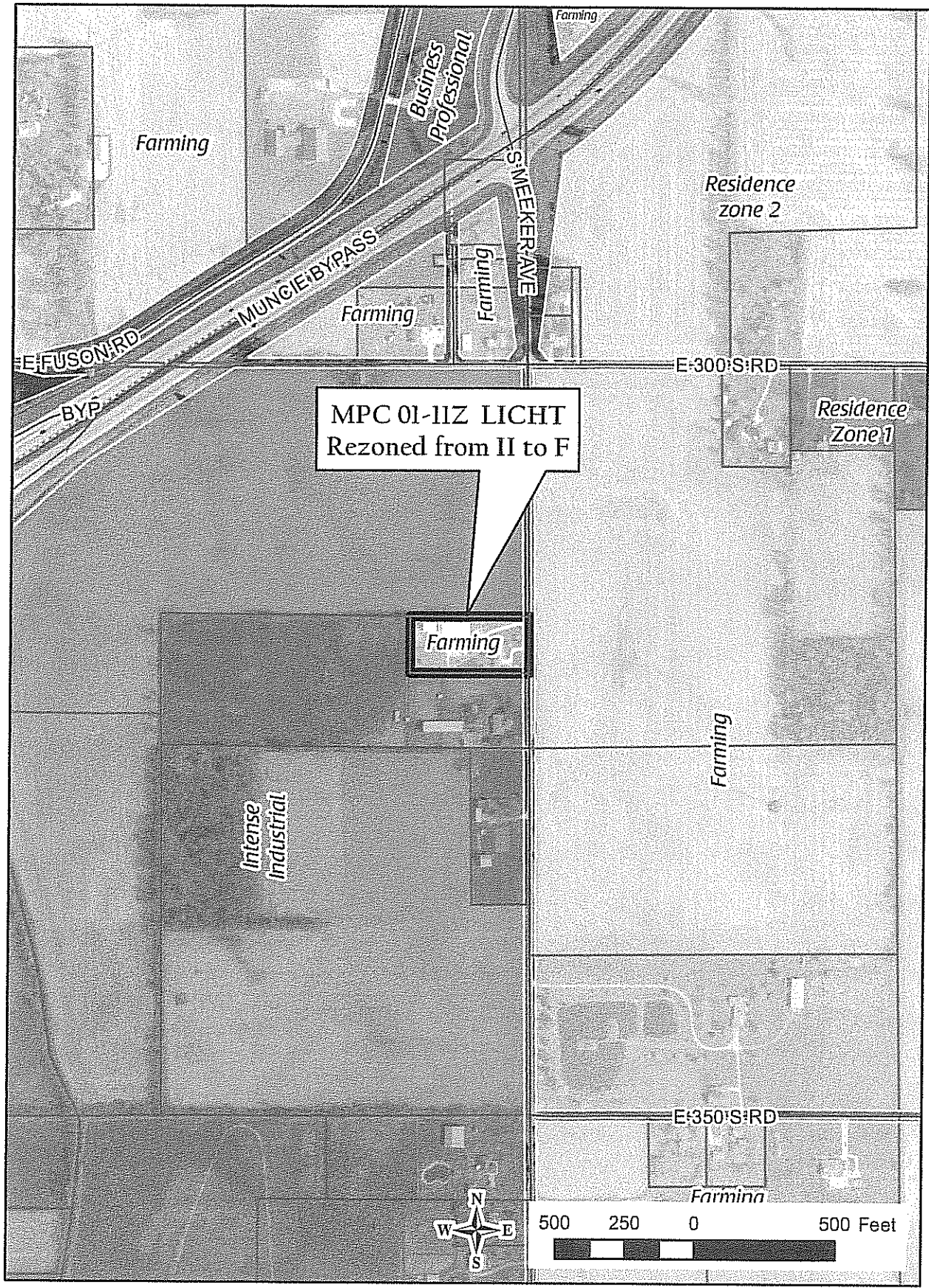
  
Larry W. Bledsoe, Jr., Member

**ATTEST:**

  
Judy Rust, Auditor

**EXHIBIT A**  
**DELAWARE COUNTY REZONING CASES APPROVED FOR 2011**

<b>MPC 01-11Z</b>	<b>KRIS &amp; KEVIN LICHT</b>
<b>ADDRESS:</b>	<b>5161 S MEEKER AVE</b>
<b>TOWNSHIP:</b>	<b>MONROE</b>
<b>REQUEST:</b>	<b>II INTENSE INDUSTRIAL ZONE TO F FARMING ZONE</b>
<b>MPC ACTION:</b>	<b>FAVORABLE RECOMMENDATION (6-0)</b>
<b>DATE:</b>	<b>7-7-2011</b>
<b>COUNTY COM. ACTION:</b>	<b>ADOPTED (2-0)</b>
<b>DATE:</b>	<b>8-1-2011</b>



MPC 01-11Z LICHT  
Rezoned from II to F

Farming

Intense  
Industrial

Farming

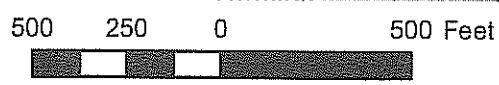
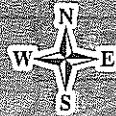
Residence  
zone 2

Residence  
Zone 1

E-300 S RD

E-350 S RD

Farming



**REPORT TO THE BOARD OF COMMISSIONERS  
OF  
DELAWARE COUNTY, INDIANA**

February 6th, 2012

**To The Honorable:**

Board of County Commissioners of Delaware County, Indiana

**Dear Council Members:**

In accordance with the provisions of the Delaware County Comprehensive Zoning Ordinance, Article XI, Section 3, Subsection E, the Delaware-Muncie Metropolitan Plan Commission hereby submits to you copies of portions of the Official Zone Maps for Delaware County, Indiana, showing the location of all zoning changes acted upon by the Plan Commission and adopted by the Board of County Commissioners of Delaware County, Indiana, during the year of 2011; a listing of such changes is attached herein as Exhibit "A".

The Plan Commission approved the Official Zone Maps for Delaware County, Indiana, as updated to reflect the 2011 Official Zone Maps for Delaware County, Indiana on the 2nd day of February, 2012 by a vote of 6 yeas and 0 nays (2 were absent).

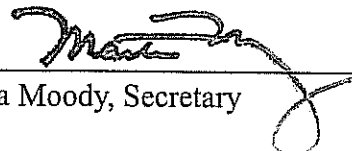
**Dated** this 6th day of February, 2012.

**DELAWARE-MUNCIE METROPOLITAN  
PLAN COMMISSION**

**BY:**



\_\_\_\_\_  
Tom Green, President



\_\_\_\_\_  
Marta Moody, Secretary