



# A quick guide to Workplace Health Partners

## Quality healthcare for you and your family

- ✓ No-cost primary and preventive care
- ✓ Skilled medical professionals
- ✓ Health coaching and wellness education
- ✓ Convenient hours and appointment times



Strengthened by



Indiana University Health

# We're here for you

## Visit Workplace Health Partners for:

### Preventive Care

- Annual physicals and routine health exams
- Women's health exams (pelvic exams and pap smears)
- Men's health exams (including prostate exams)
- School and sports physicals
- Preventive screenings (blood pressure, blood sugar, cholesterol)
- Immunizations (seasonal flu, hepatitis B, tetanus boosters)
- Individual health coaching
- Nutrition counseling and wellness education

### Immediate and Primary Care

- Diagnostic screenings (influenza, strep throat, vision, etc.)
- Treatment of minor illnesses and injuries (sore throat, flu, seasonal allergies, stomach pain, sinus infection, eye infection, skin infection, rash, etc.)
- Management of chronic illnesses (diabetes, high blood pressure, COPD, high cholesterol, etc.)

### Lab Services

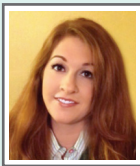
- Screening and diagnostic labs as ordered by your doctor

**Pharmacy** – The health center will send your prescription to Young at Heart pharmacy, and your medication will be mailed to your home.





## Meet the healthcare team



**Dama O'Keefe, NP**

- Certified family nurse practitioner
- Master's degree in nursing – Indiana Wesleyan University
- Bachelor's degree in nursing – University of St. Francis
- Thirteen years of experience in nursing (intensive care, perioperative care and education)

Visit Dama for the preventive care and immediate and primary care services listed on the left side of this brochure. She looks forward to partnering with you and your family to meet your healthcare needs.



**Stacy Hoeksema**

- Experienced health coach
- Master's degree in exercise physiology – Ball State University

Visit Stacy for individualized nutrition and wellness consultations; disease management or prevention education; and accountability with goal setting and behavior change.

# Visit us for your health needs

If you or a member of your family needs primary care or preventive services, make an appointment at Workplace Health Partners.

## Location and contact information

Workplace Health Partners

120 N. Tillotson Ave.

Muncie, IN 47304

T 765.747.3888

## Online appointment scheduling

[booknow.appointment-plus.com/6gb1t4mx/](http://booknow.appointment-plus.com/6gb1t4mx/)

## For more details

Visit [co.delaware.in.us](http://co.delaware.in.us) for a list of frequently asked questions or call the health center at 765.747.3888.

## Hours

Monday - Friday: 7 am – 6 pm

*Appointments are required. Same-day appointments may be available.*



Strengthened by



Indiana University Health